

Kernel for Tape

“The Uncomplicated Way to Recover Lost Tape Data from Damaged Tape Cartridge”

PRODUCT GUIDE

Table of Contents

1.	Introduction to Kernel for Tape	4
1.1	Using this Manual	4
1.2	About Kernel for Tape	5
1.3	Salient Features	5
1.4	Who Should Use this Software?	5
2.	Getting Started	7
2.1	Installation Pre-requisites.....	7
2.2	Downloading Kernel for Tape for the First Time	7
2.3	Install Kernel for Tape	8
2.4	Start Kernel for Tape.....	8
2.5	Uninstall Kernel for Tape	8
3.	Software Interface	9
3.1	Tool Bar	9
4.	Recovering Deleted Data	10
5.	Saving Recovered Data.....	13
6.	Full Version	14
6.1	Requirement of Full Version.....	14
6.2	Purchasing Full Version.....	14
7.	Support.....	15
8.	Troubleshooting	16
8.1	Common Issues	16
8.2	Frequently Asked Questions	16
9.	Legal Notices	17
9.1	Copyright	17
9.2	Trademark	17
9.3	Disclaimer	17
9.4	License Agreement	17

Table of Figures

Figure 4.1: Main Window 10

Figure 4.2: Drive selection window 11

Figure 4.3: Recovery Process..... 11

Figure 4.4: Recovered Files 12



1. Introduction to Kernel for Tape

Welcome to the user manual for Kernel for Tape, the most effective and convenient tape recovery software that recovers data from all types of corrupt, damaged tapes cartridges such as DLT, AIT, LTO, DAT tapes and formats. This user manual comprises step by step guidelines on using Kernel for Tape.

1.1 Using this Manual

This user manual is intended to guide users on using Kernel for Tape. We suggest that first time users should read this user manual completely and carefully before proceeding to use the software. However, if you are an experienced user, you can use the table of contents to find out information pertaining to the tasks that you need to perform by using Kernel for Tape.

You can use the table of contents to navigate through different sections of this user manual. The table of contents lists all the sections that are contained in this user manual in chronological order. The user manual comprises the following sections:

- Introduction
- Getting Started
- Software Interface
- Recovering Deleted Data
- Saving Recovered Data
- Full Version
- Support
- Troubleshooting
- Legal Notices

Certain abbreviations have been used throughout this manual. For clear understanding of the contents of this user manual, please go through the list of abbreviations, mentioned below, before reading the manual.

1.1.1 List of Abbreviations

DLT: Digital Linear Tape

LTO: Linear Tape Open

AIT: Advanced Intelligent Tape

DAT: Digital Audio Tape

MS: Microsoft

RAM: Random Access Memory

MB: Mega-Byte

GB: Giga-Byte

1.2 About Kernel for Tape

Kernel for Tape is an efficient data recovery tool that recovers data from all types of corrupted, damaged tapes cartridges such as DLT, AIT, LTO, DAT tapes and formats. Kernel for Tape - data recovery software, recovers tape data, lost due to following reasons -

- Erased Tape
- Damaged tape header or misalignment of drive heads
- Broken or de-spooled backup tapes
- Failed Backup Systems and Tape Libraries
- Unexpected system shutdown or software failure

During recovery process a complete scan of the damaged tape is performed to locate and restore the found data. After the complete scanning, data found in the damaged tape is stored in an image file and the found files and folders are displayed in a tree like structure from where you can easily copy your recovered files to a user specified location.

1.3 Salient Features

Salient features of Kernel for Tape include:

- Recovery from damaged tapes.
- Recovery of missing files(s) and folder(s).
- Efficient recovery of data lost due to tape corruption.
- Live Update available for the software, to make sure that you always have the latest version of the software.

1.4 Who Should Use this Software?

The capability of Kernel for Tape to recover data from all types of corrupted, damaged tapes cartridges such as DLT, AIT, LTO, DAT tapes and formats makes it appropriate for use by everyone, who keeps his or her important data stored in tape cartridges. Data in tape cartridges could have been corrupted due to

virus attacks, failed backup systems and tape libraries, erased tape, damaged tape header or misalignment of drive heads, improper system shutdown or broken or de-spoiled backup tapes.

2. Getting Started

Now that you have understood the features and potential of Kernel for Tape, you are ready to get hands on experience of the software. To start recovering files from damaged Tapes, you will first need to download and install the software.

It is strongly recommended that before installing Kernel for Tape, you should go through the installation pre-requisites for the software, so that you can be rest assured that your computer is appropriately configured to run the software.

2.1 Installation Pre-requisites

Kernel for Tape works on all Windows-based computers. Following are detailed minimum system requirements for the Host Computer:

2.1.1 Hardware Requirements:

The hardware requirements for installing the software are as follows:

- Pentium II 400 MHz
- Minimum 64MB RAM (128 MB recommended)
- Enough space to save the recovered data; for example, if you expect to recover 40 MB lost data, the good device should have at least 40 MB free space.

2.1.2 Operating System Requirements:

Supported Operating Systems:

- Windows Vista
- Windows XP
- Windows 2003
- Windows 2000
- Windows ME
- Windows 95
- Windows 98

2.2 Downloading Kernel for Tape for the First Time

After checking your computer with the prescribed system requirements for Kernel for Tape, you can download and install the software on your computer. You can buy the full version of the software from any one of our authorized resellers– Element5, Asknet and 2CO.

If you want to try using Kernel for Tape before buying it, you can download the evaluation version from the following link:

<http://www.nucleustechnologies.com/Download-Tape-Data-Recovery-Software.php>

2.3 Install Kernel for Tape

After downloading the installer file for Kernel for Tape, you can install the software by running the file. To install Kernel for Tape:

1. Double-click the Kernel for Tape installer. Follow the on-screen instructions.

The **Setup Installation Complete** screen will be displayed.

2. Click **Finish** to launch the software.

2.4 Start Kernel for Tape

To start Kernel for Tape:

Click the **Start → All Programs → Kernel for Tape**

Alternatively, you can launch Kernel for Tape by double-clicking the shortcut icon available on the Desktop and Quick Launch icon.


2.5 Uninstall Kernel for Tape

You may need to uninstall and re-install Kernel for Tape. To uninstall Kernel for Tape:

1. Click the **Start → All Programs → Kernel for Tape → Uninstall Kernel for Tape**

A warning message will be displayed.

2. Click **Yes** to uninstall Kernel for Tape.

 Before proceeding to uninstall Kernel for Tape, you must ensure that the software is not running in your computer.

You can alternatively uninstall Kernel for Tape from the **Control Panel** by performing the following steps:

1. Click the **Start Menu → Control Panel** and then double click the **Add or Remove Programs** icon.
2. Select **Kernel for Tape** and click **Remove**. A warning message will be displayed.
3. Click **Yes** to uninstall Kernel for Tape

3. Software Interface

Now that Kernel for Tape has been installed on your computer, you can start using the software after getting acquainted with the software interface.

3.1 Tool Bar

The tool-bar of Kernel for Tape comprises four options:

Menu items in Tool Bar:

Field Name	Field Description
Home	Opens the homepage of the software website
Live Update	Updates the software with new version available on the Nucleus server
About	Displays version related and other information
Buy Online	Purchase the software online from website

4. Recovering Deleted Data

Now that you have complete familiarity of the user interface of Kernel for Tape, you are ready to recover deleted data. To recover deleted data from tape follow these steps:

- In the main window of Kernel for Tape two buttons named as "Create Image" and "Load Image" are displayed.

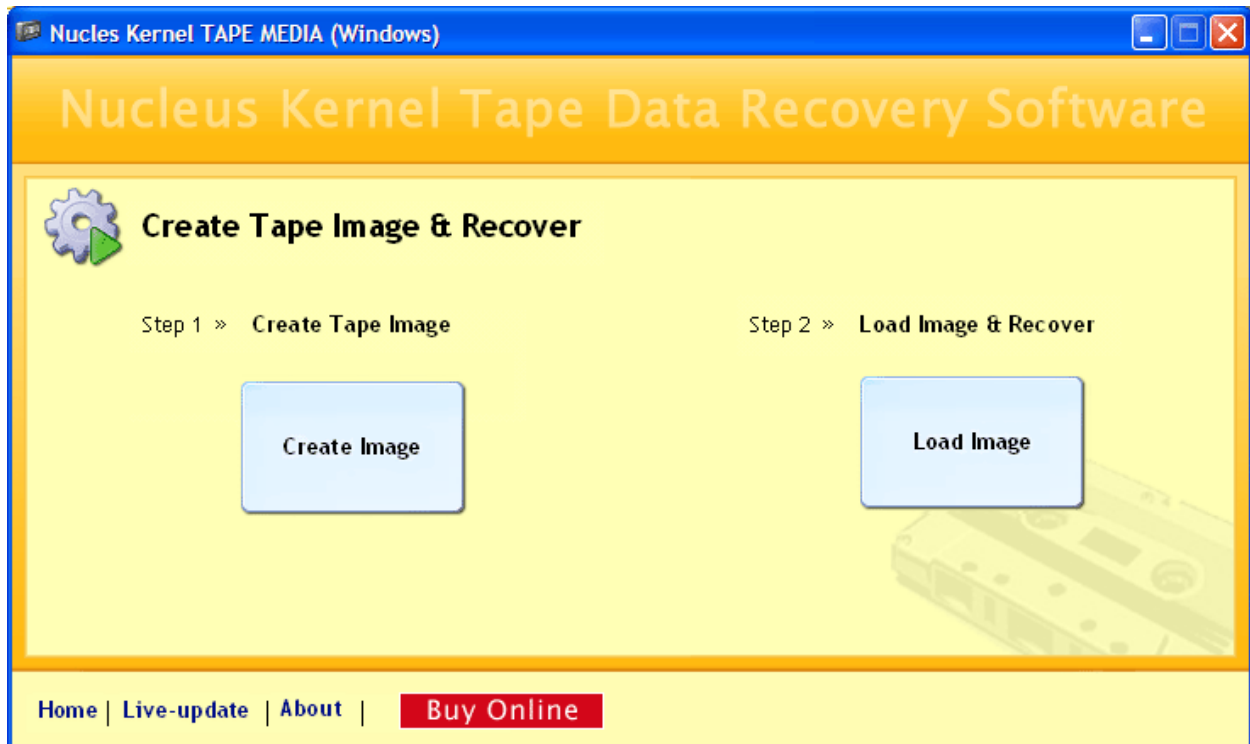


Figure 4.1: Main Window

- Click **Create Image** to start the process of recovery or **click Load Image** to load the summary of earlier recovery. A dialogue box to select the tape drive will appear.

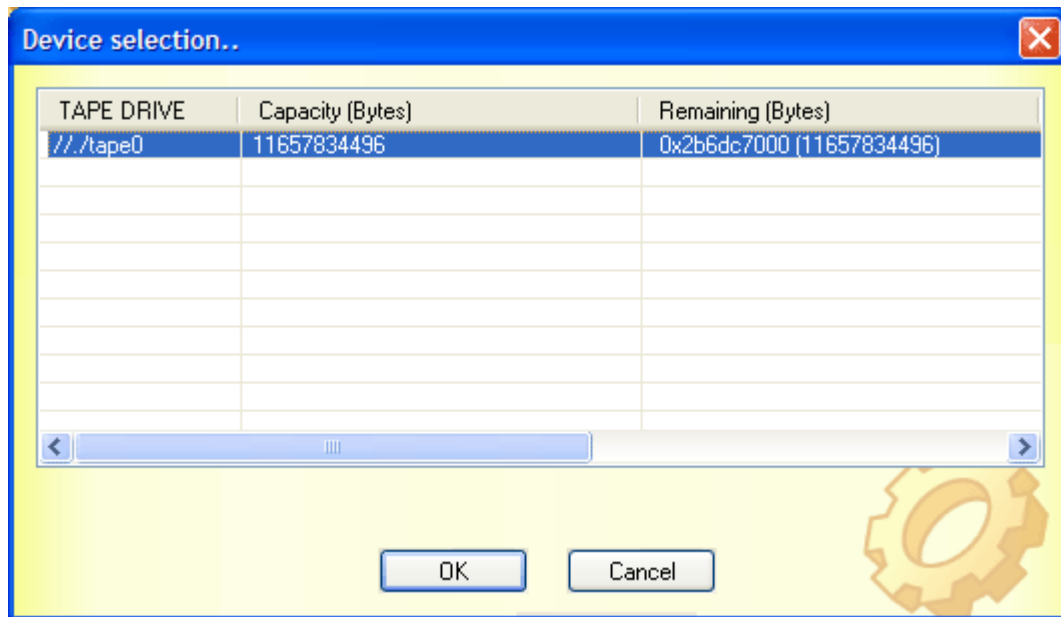


Figure 4.2: Drive selection window

- Select the tape drive that contain your deleted data and click **OK** button. A new dialogue box showing the tape image creation process for saving recovered data will appear.



Figure 4.3: Recovery Process

- Once the image creation process is complete, a new screen displaying all files and folders of the selected tape drive will appear.

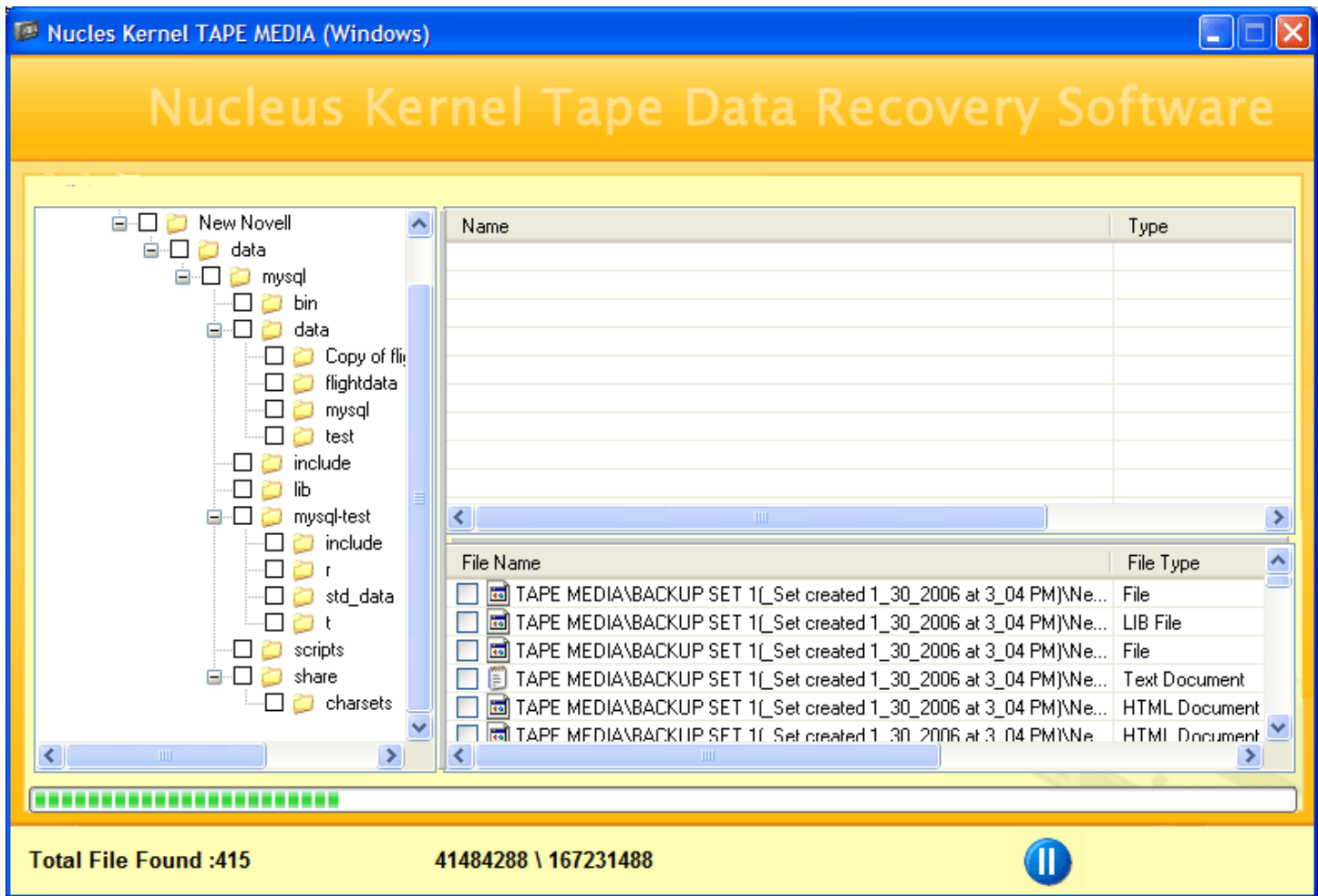


Figure 4.4: Recovered Files

5. Saving Recovered Data

For saving recovered data, these steps need to be performed.

- Select the file you want to save. Right click the file.
- A popup menu will appear. Select **save file** from it or click **Next** button on the bottom of window to save recovered file.
- Choose the desired location and click **OK** button to copy selected files

6. Full Version

Although you can use Kernel for Tape evaluation version for free and experience the capabilities of the software, but there are certain features that are not available in the evaluation version.

6.1 Requirement of Full Version

By using the evaluation version of Kernel for Tape, you can view the files and folders that are recoverable; however, you cannot save them with evaluation version. You will need to buy the full version of the software to save the recovered files and folders.

6.2 Purchasing Full Version

You can buy the full version of Kernel for Tape from any one of our authorized resellers – Element5, Asknet and 2CO.

As soon as the purchase transaction with our resellers gets completed, our sales team will send you an email comprising the URL to download the full version of Kernel for Tape and activation details of the software.

7. Support

We have an extensive and efficient support system in place to assist our customers with all issues related to using Kernel for Tape. The software comes with an embedded help manual that can be accessed by clicking **Help→Software Help** in the menu-bar. You can also press the F1 key on the keyboard of your computer to access the embedded help of Kernel for Tape.

You can access the online help for Kernel for Tape at <http://www.nucleustechnologies.com/Online-Helps.html>

View Animated Working Demo of the software at <http://www.nucleustechnologies.com/tape/animatedtape.html>

We also have live support wherein you can chat with our software experts at <http://www.nucleustechnologies.com/Support.html>

To talk on phone with our software experts call:

Help line:

+91-9818725861

1-866-348-7872 (Toll Free for USA/CANADA)

You can also email us about your queries at;

sales@nucleustechnologies.com for Sales

support@nucleustechnologies.com for Support

contact@nucleustechnologies.com for General Queries

8. Troubleshooting

This section deals with your generic and specific queries pertaining to using Kernel for Tape.

8.1 Common Issues

Why does Kernel for Tape has limitations in evaluation copy?

The free evaluation version of Kernel for Tape is intended to enable you to experience the capabilities of the software. You will need to buy the software to save the recovered files and folders.

8.2 Frequently Asked Questions

How to Buy Kernel for Tape?

You can buy Kernel for Tape online at <http://www.nucleustechnologies.com/Buy-Tape-Data-Recovery-Software.php>

I have lost my full version for Kernel for Tape. Can you help me?

Please email us at sales@nucleustechnologies.com. Please include your name, address, email address, and order confirmation number (if you have it). We will be happy to help you.

9. Legal Notices

This section comprises the legal specification about Kernel for Tape and the company NUCLEUS DATA RECOVERY.COM PRIVATE LIMITED

9.1 Copyright

NUCLEUS DATA RECOVERY.COM PRIVATE LIMITED, Nucleus Kernel accompanied user manual and documentation are copyright of NUCLEUS DATA RECOVERY.COM PRIVATE LIMITED, with all rights reserved. Under the copyright laws, this user manual cannot be reproduced in any form without the prior written permission of NUCLEUS DATA RECOVERY.COM PRIVATE LIMITED. No Patent Liability is assumed, however, with respect to the use of the information contained herein.

© NUCLEUS DATA RECOVERY.COM PRIVATE LIMITED. All rights reserved.

9.2 Trademark

Nucleus Kernel ® is a copyright work of NUCLEUS DATA RECOVERY.COM PRIVATE LIMITED

Windows 95®, Windows 98®, Windows ME®, Windows NT®, Windows 2000 Server®, Windows 2000 Advanced Server®, Windows 2003 Server®, Windows XP®, Windows Vista, and MS-DOS are registered trademarks of Microsoft Corporation.

All other brand and product names are trademarks or registered trademarks of their respective companies.

9.3 Disclaimer

The Information contained in this manual, including but not limited to any product specifications, is subject to change without notice. NUCLEUS DATA RECOVERY.COM PRIVATE LIMITED provides no warranty with regard to this manual or any other information contained herein and here by expressly disclaims any implied warranties of merchantability or fitness for any particular purpose with regard to any of the foregoing NUCLEUS DATA RECOVERY.COM PRIVATE LIMITED assumes no liability for any damages incurred directly or indirectly from any technical or typographical errors or omissions contained herein or for discrepancies between the product and the manual. In no event shall NUCLEUS DATA RECOVERY.COM PRIVATE LIMITED, be liable for any incidental, consequential special, or exemplary damages, whether based on tort, contract or otherwise, arising out of or in connection with this manual or any other information contained herein or the use there of.

9.4 License Agreement

Kernel for Tape Copyright © by NUCLEUS DATA RECOVERY.COM PRIVATE LIMITED

Your Agreement to this License

You should carefully read the following terms and conditions before using, installing or distributing this software, unless you have a different license agreement signed by NUCLEUS DATA RECOVERY.COM PRIVATE LIMITED. The terms and conditions of this License describe the permitted use and users of each Licensed Copy of Kernel for Tape. For purposes of this License, if you have a valid license, you have the right to use a single Licensed Copy of Nucleus Kernel.

Scope of License

Each Licensed Copy of Kernel for Tape may either be used by a single person or used non-simultaneously by multiple people who use the software personally installed on a single workstation. All rights of any kind in Nucleus Kernel, which are not expressly granted in this License, are entirely and exclusively reserved to and by NUCLEUS DATA RECOVERY.COM PRIVATE LIMITED. You may not rent, lease, modify, translate, reverse engineer, decompile, disassemble, or create derivative works based on, Nucleus Kernel, nor permit anyone else to do so. You may not make access to Nucleus Kernel available to others in connection with a service bureau, application service provider, or similar business, nor permit anyone else to do so.

Warranty Disclaimers and Liability Limitations

Kernel for Tape , and any and all accompanying software, files, data and materials, are distributed and provided AS IS and with no warranties of any kind, whether expressed or implied. In particular, there is no warranty for the quality of data recovered. You acknowledge that good data processing procedure dictates that any program, including Nucleus Kernel, must be thoroughly tested with non-critical data before there is any reliance on it, and you hereby assume the entire risk of all use of the copies of Nucleus Kernel covered by this License. This disclaimer of warranty constitutes an essential part of this License. In addition, in no event does NUCLEUS DATA RECOVERY.COM PRIVATE LIMITED authorize you or anyone else to use Kernel for Tape in applications or systems where Kernel for Tape failure to perform can reasonably be expected to result in a significant physical injury, or in loss of life. Any such use is entirely at your own risk, and you agree to hold NUCLEUS DATA RECOVERY.COM PRIVATE LIMITED harmless from any and all claims or losses relating to such unauthorized use.

General

This License is the complete statement of the agreement between the parties on the subject matter, and merges and supersedes all other or prior understandings, purchase orders, agreements and arrangements. This License shall be governed by the laws of the State of Delhi. Exclusive jurisdiction and venue for all matters relating to this License shall be in courts and for a located in the State of Delhi, and you consent to such jurisdiction and venue. There are no third party beneficiaries of any promises, obligations or representations made by NUCLEUS DATA RECOVERY.COM PRIVATE LIMITED herein.

Any waiver by NUCLEUS DATA RECOVERY.COM PRIVATE LIMITED of any violation of this License by you shall not constitute, nor contribute to, a waiver by NUCLEUS DATA RECOVERY.COM PRIVATE LIMITED of any other or future violation of the same provision, or any other provision, of this License.